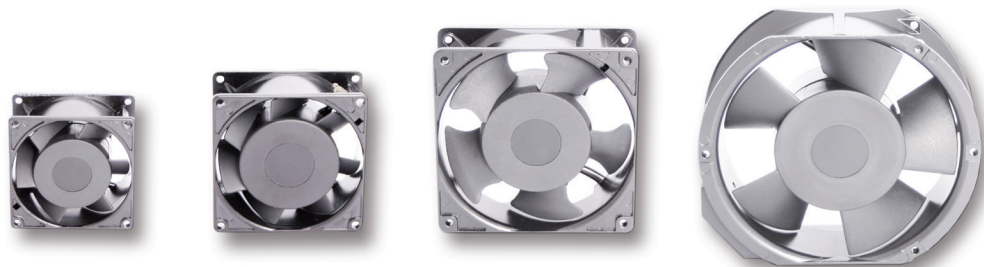


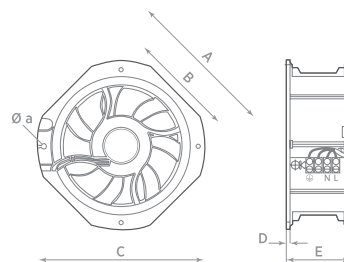
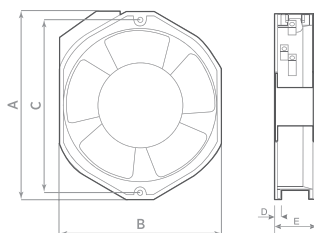
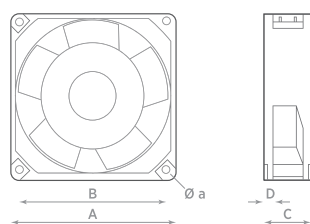
EXTRA SLIM AXIAL FANS

RQ 50 - RQ 60 - RQ 160 - RQ 370 - RQ 850



- Specifically designed to reduce temperature inside cabinets and electronic equipment;
- DC and AC axial fans;
- Ball bearing motor;
- Specifically designed for fitting in electrical and electronic equipment cabinets;
- Body made of nylon for DC Models, die-cast aluminium for AC Models;
- Impeller made of nylon reinforced with fiberglass except RQ 850 model;
- Maximum operating temperature: +70°C (except RQ 850 model +60°C)

DIMENSIONS



| Model | Ø hole | A | B | C | D | Ø a | Kg |
|-----------|--------|-----|------|----|-----|-----|------|
| RQ 50 AC | 78 | 80 | 71,4 | 38 | 3,5 | 4,3 | 0,3 |
| RQ 50 DC | 78 | 80 | 71,5 | 25 | 4 | 4,3 | 0,1 |
| RQ 60 AC | 90 | 92 | 82,5 | 38 | 3,5 | 4,3 | 0,45 |
| RQ 160 AC | 117 | 119 | 105 | 38 | 4 | 4,3 | 0,6 |
| RQ 160 DC | 117 | 119 | 105 | 38 | 5 | 4,3 | 0,22 |

| Model | A | B | C | D | E | Ø hole | Ø a | Kg |
|-----------|-----|-----|-----|---|----|--------|-----|-----|
| RQ 370 AC | 172 | 150 | 162 | 6 | 51 | 148 | 4,5 | 0,9 |
| RQ 370 DC | 172 | 150 | 162 | 6 | 51 | 149 | 4,2 | 0,8 |

| Model | A | B | C | D | E | Ø hole | Ø a | Kg |
|-----------|-----|-----|-----|---|----|--------|-----|-----|
| RQ 850 AC | 225 | 170 | 260 | 7 | 80 | 215 | 4,5 | 1,9 |

TECHNICAL DATA

| Description | Code | Voltage (V) | Frequency (Hz) | max Flow rate (m³/h) | Absorbed Power (W) | Nom. curr. (A) | Rev. per min. (RPM) | Noisiness dB(A) _{1m} | Weight (Kg) |
|-------------|---------|-------------|----------------|----------------------|--------------------|----------------|---------------------|-------------------------------|-------------|
| RQ 50 | 0058500 | 12 | - | 55 | 2 | 0,15 | 2500 | 22 | 0,1 |
| RQ 50 | 0058600 | 24 | - | 55 | 2 | 0,08 | 2500 | 22 | 0,1 |
| RQ 50 | 0040400 | 110-120 | 50/60 | 45 | 10 | 0,14 | 2400 | 27 | 0,3 |
| RQ 50 | 0040100 | 220-240 | 50/60 | 45 | 10 | 0,07 | 2400 | 27 | 0,3 |
| RQ 60 | 0058350 | 110-120 | 50/60 | 75 | 14 | 0,18 | 2800 | 32 | 0,45 |
| RQ 60 | 0058300 | 220-240 | 50/60 | 75 | 14 | 0,09 | 2800 | 32 | 0,45 |
| RQ 160 | 0058700 | 12 | - | 160 | 4 | 0,30 | 2200 | 31 | 0,22 |
| RQ 160 | 0058800 | 24 | - | 160 | 4 | 0,15 | 2200 | 31 | 0,22 |
| RQ 160 | 0040310 | 12 | 50/60 | 145 | 15 | 2 | 2600 | 38 | 0,51 |
| RQ 160 | 0040300 | 24 | 50/60 | 145 | 15 | 1 | 2600 | 38 | 0,51 |
| RQ 160 | 0040350 | 48 | 50/60 | 145 | 15 | 0,5 | 2600 | 38 | 0,51 |
| RQ 160 | 0040500 | 110-120 | 50/60 | 145 | 20 | 0,22 | 2500 | 37 | 0,6 |
| RQ 160 | 0040200 | 220-240 | 50/60 | 145 | 20 | 0,12 | 2500 | 37 | 0,6 |
| RQ 370 | 0058940 | 12 | - | 300 | 11 | 0,86 | 2600 | 46 | 0,8 |
| RQ 370 | 0058950 | 24 | - | 300 | 11 | 0,43 | 2600 | 46 | 0,8 |
| RQ 370 | 0058960 | 48 | - | 300 | 13 | 0,28 | 2600 | 46 | 0,8 |
| RQ 370 | 0058900 | 110-120 | 50/60 | 345 | 25 | 0,30 | 2700 | 45 | 0,9 |
| RQ 370 | 0058400 | 220-240 | 50/60 | 345 | 25 | 0,15 | 2700 | 45 | 0,9 |
| RQ 850 | 0058250 | 110-120 | 50/60 | 840 | 46 | 0,4 | 2400 | 52 | 2,0 |
| RQ 850 | 0058200 | 220-240 | 50/60 | 840 | 44 | 0,2 | 2400 | 52 | 2,0 |

ACCESSORIES:



Protection grilles

| Description | Code | Suitable for series |
|-------------------|---------|---------------------|
| protection grille | 0010800 | RQ 50 |
| protection grille | 0064330 | RQ 60 |
| protection grille | 0010900 | RQ 160 |
| protection grille | 0064200 | RQ 370 |
| protection grille | 0058260 | RQ 850 |

grille + filter

| Description | Code | Suitable for series |
|-----------------|---------|---------------------|
| grille + filter | 0064310 | RQ 50 |
| grille + filter | 0064320 | RQ 60 |
| grille + filter | 0064300 | RQ 160 |

Cable connector

| Description | Code | Suitable for series |
|-------------------|---------|----------------------------|
| in line connector | 0064400 | RQ series (with terminals) |
| 45° connector | 0064450 | RQ series (with terminals) |