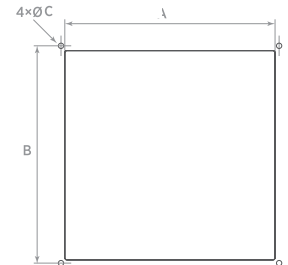


Model	A	B	C	D	E
TXQ M 550	365×365	290×290	105	45	4-M4
TXQ M 550 CA	365×365	290×290	105	45	4-M4



Drilling scheme	A	B	ØC
TXQ M 550	250	260	4,5

TXQ M 550

AERATION

- Roof exhaust fan to extract air directly outside;
- IP24 protection degree;
- IP44 side cabinet protection degree;
- Maximum air temperature 60°C;
- Quick and functional installation thanks to the electrical connection and mounting from the inside of the control cabinet;
- Energy saving and reduced noise;
- Painted steel body grey RAL 7035;
- Safety protection grille;
- Ball bearing motor impeller self-cleaning backward curved blades;
- Adjustable speed through industrial controllers RGM2 or RGE (optional);
- Necessary to provide for installation an air intake grille in the lower part of the control cabinet;
- In accordance with Standard EN 60335-2-80.

TECHNICAL DATA

Model	Code	Voltage (V)	Frequency (Hz)	Flow rate (m³/h)	Power (W)	Nom. Curr. (A)	IP Grade		Noisiness dB(A) _{1m}	Weight (Kg)
							roof fan	side cabinet		
TXQ M 550	0075810	230	50/60	510/570	60	0,26	IP 24	IP 44	52	5,8
TXQ M 550 CA	0075850	(Ventilation hood without motor)		-	-	-	IP 24	IP 44	-	3,2

(*) 110 V version available on request

FLOW CHARTS

